

MOURIER M31 APARTMENTS
80 UNIT APARTMENT PROJECT

WOOCREEK OAKS BLVD.
ROSEVILLE, CALIFORNIA



FRONT ELEVATION A **COLOR SCHEME 1**
1/8" = 1'-0"

ADHERED MASONRY VENEER

CONCRETE ROOF TILES

VINYL WINDOWS & S.G.D.'S
W/ INSUL. GLASS, TYP.

5' GALV MET FACIA GUTTER WITH
RECTANGULAR DOWNSPOUTS
(PAINT), TYP.

KWIK KOTE STUCCO

ADHERED MASONRY VENEER

METAL OVERHEAD GARAGE DOOR



REAR ELEVATION A
1/8" = 1'-0"

PREFABRICATED STAIR SYSTEM

CONCRETE ROOF TILES

5' GALV MET FACIA GUTTER WITH
RECTANGULAR DOWNSPOUTS
(PAINT), TYP.

PROFILE OF STAIR WALL IN
FOREGROUND

VINYL WINDOWS & S.G.D.'S
W/ INSUL. GLASS, TYP.

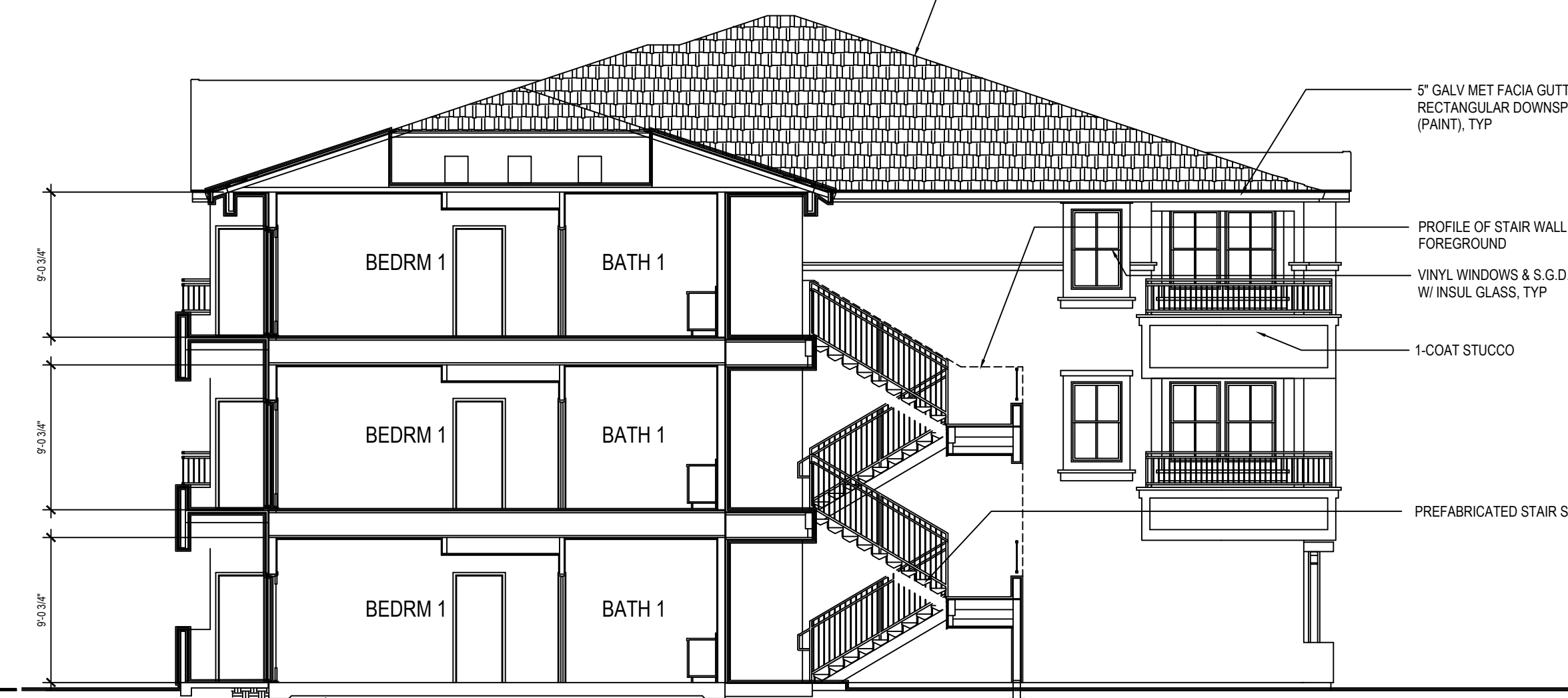
1-COAT STUCCO

PREFABRICATED STAIR SYSTEM



SIDE ELEVATION A
1/8" = 1'-0"

ADHERED MASONRY VENEER



BUILDING CROSS SECTION A
1/8" = 1'-0"

EXTERIOR COLOR SCHEDULE			
KEY	SURFACE	SCHEME 1	SCHEME 2
(A)	ROOF MATERIAL CONCRETE TILE	MONIER LIFE/TILE - SLATE COLOR: CORNBLUESTONE	MONIER LIFE/TILE - SLATE COLOR: CORNBLUESTONE
(B)	METAL GUTTER	CRISP LINEN SW 6378	CRISP LINEN SW 6378
(C)	EAVE / BARGE BD	CRISP LINEN SW 6378	CRISP LINEN SW 6378
(D)	WINDOW / DOOR TRIM	CRISP LINEN SW 6378	CRISP LINEN SW 6378
(E)	WALL	WHOLE WHEAT SW 6121	KHAKI SHADE SW 7533
(F)	WALL	REGENT TAN SW 7501	WELL BRED BROWN SW 7027
(G)	WALL	SABLE SW 6083	STRAW HARVEST SW 7068
(H)	WINDOW FRAMES	ALMOND (STANDARD)	ALMOND (STANDARD)
(I)	ENTRY DOORS	SABLE SW 6083	OTTIE SW 6041
(J)	GARAGE DOORS	SABLE SW 6083	OTTIE SW 6041
(K)	METAL RAILING	URBAN BROZE SW 7048	URBAN BROZE SW 7048
(L)	STONE VENEER	EL DONADO STONE PATTERN: FIELDLEDGE	COLOR: ANDENTE
(N)	LATTICE AT GARAGE	CRISP LINEN SW 6378	CRISP LINEN SW 6378

DRAWING DATE: APRIL 2, 2019

REVISION

△
△
△
△
△

DATE OF ISSUE

MOURIER M31 APARTMENTS
80 UNIT APARTMENT PROJECT

WOOCREEK OAKS BLVD.
ROSEVILLE, CALIFORNIA



FRONT ELEVATION A **COLOR SCHEME 2**
1/8" = 1'-0"

ADHERED MASONRY VENEER

CONCRETE ROOF TILES

VINYL WINDOWS & S.G.D.'S
W/ INSUL. GLASS, TYP.

5' GALV MET FACIA GUTTER WITH
RECTANGULAR DOWNSPOUTS
(PAINT), TYP.

KWIK KOTE STUCCO

ADHERED MASONRY VENEER

METAL OVERHEAD GARAGE DOOR



REAR ELEVATION A
1/8" = 1'-0"

PREFABRICATED STAIR SYSTEM

CONCRETE ROOF TILES

5' GALV MET FACIA GUTTER WITH
RECTANGULAR DOWNSPOUTS
(PAINT), TYP.

PROFILE OF STAIR WALL IN
FOREGROUND

VINYL WINDOWS & S.G.D.'S
W/ INSUL. GLASS, TYP.

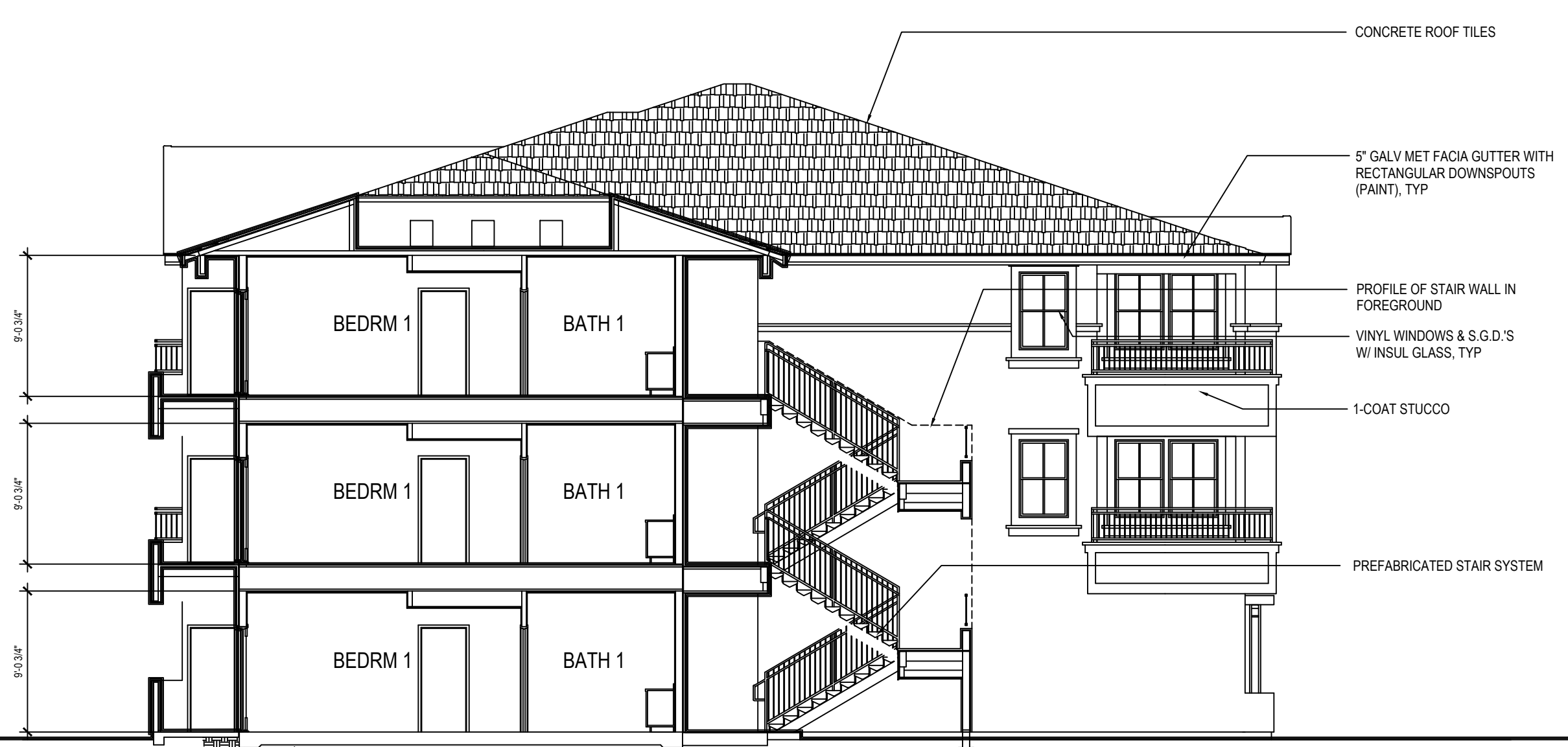
1-COAT STUCCO

PREFABRICATED STAIR SYSTEM



SIDE ELEVATION A
1/8" = 1'-0"

ADHERED MASONRY VENEER



BUILDING CROSS SECTION A
1/8" = 1'-0"

EXTERIOR COLOR SCHEDULE			
KEY	SURFACE	SCHEME 1	SCHEME 2
(A)	ROOF MATERIAL CONCRETE TILE	MONIER LIFE/TILE - SLATE COLOR: CORNBLUESTONE	MONIER LIFE/TILE - SLATE COLOR: CORNBLUESTONE
(B)	METAL GUTTER	CRISP LINEN SW 6378	CRISP LINEN SW 6378
(C)	EAVE / BARGE BD	CRISP LINEN SW 6378	CRISP LINEN SW 6378
(D)	WINDOW / DOOR TRIM	CRISP LINEN SW 6378	CRISP LINEN SW 6378
(E)	WALL	WHOLE WHEAT SW 6121	KHAKI SHADE SW 7533
(F)	WALL	REGENT TAN SW 7560	WELL BRED BROWN SW 7627
(G)	WALL	SABLE SW 6083	STRAY HARVEST SW 7668
(H)	WINDOW FRAMES	ALMOND (STANDARD) SW 6083	ALMOND (STANDARD) SW 6081
(I)	ENTRY DOORS	SABLE SW 6083	OTTIE SW 6041
(J)	GARAGE DOORS	SABLE SW 6083	OTTIE SW 6041
(K)	METAL RAILING	URBAN BROZE SW 7048	URBAN BROZE SW 7048
(L)	STONE VENEER	EL DONADO STONE PATTERN: FIELDLEDGE	COLOR: ANDANTE
(N)	LATTICE AT GARAGE	CRISP LINEN SW 6378	CRISP LINEN SW 6378

DRAWING DATE: APRIL 2, 2019

REVISION

△
△
△
△
△

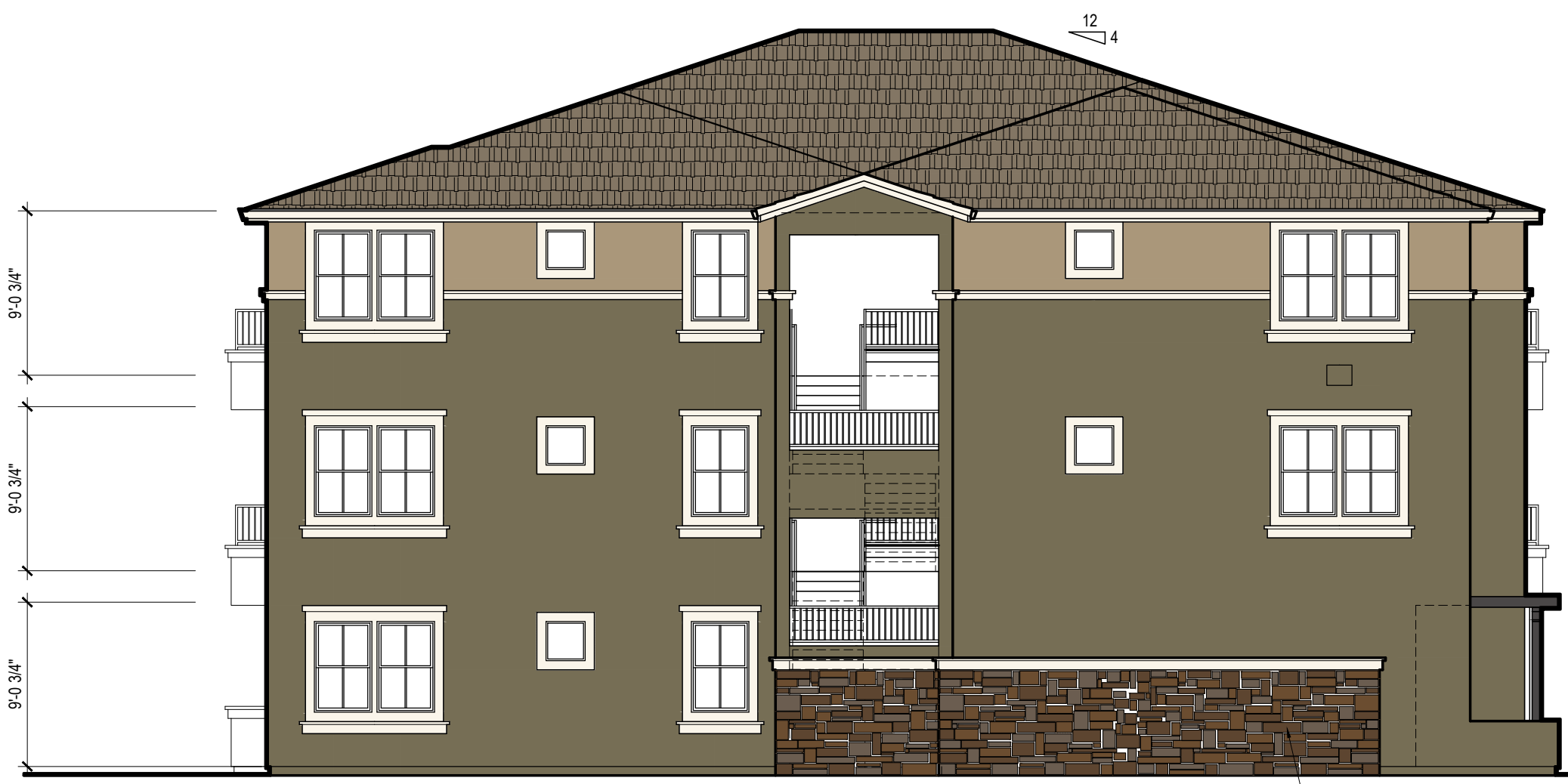
DATE OF ISSUE



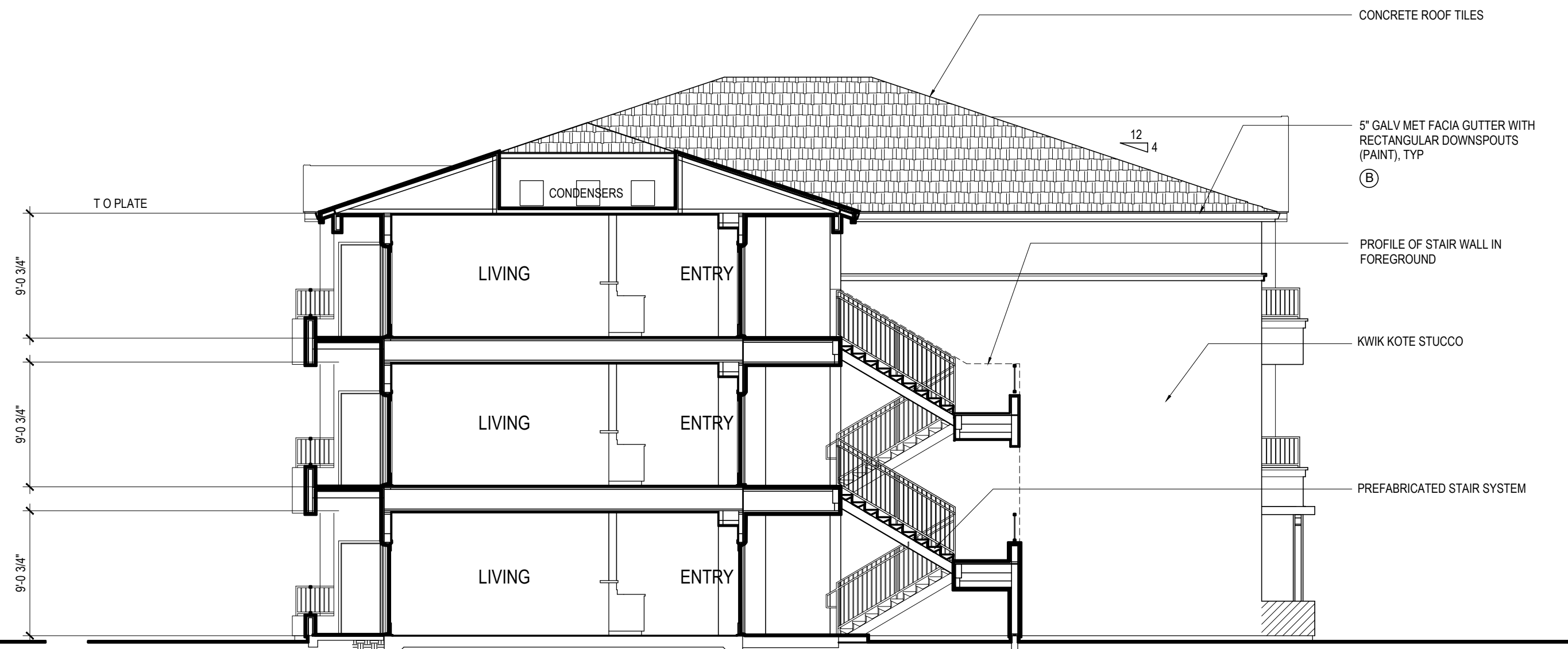
FRONT ELEVATION B2 COLOR SCHEME 2
1/8" = 1'-0"



REAR ELEVATION B2
1/8" = 1'-0"



SIDE ELEVATION B2
1/8" = 1'-0"



BUILDING CROSS SECTION B2
1/8" = 1'-0"

- ADHERED MASONRY VENEER
- CONCRETE ROOF TILES
- VINYL WINDOWS & S.G.D.'S W/ INSUL. GLASS, TYP
- 5' GALV MET FACIA GUTTER WITH RECTANGULAR DOWNSPOUTS (PAINT), TYP (B)
- KWIK KOTE STUCCO
- ADHERED MASONRY VENEER
- METAL OVERHEAD GARAGE DOOR

- CONCRETE ROOF TILES
- 5' GALV MET FACIA GUTTER WITH RECTANGULAR DOWNSPOUTS (PAINT), TYP (B)
- PROFILE OF STAIR WALL IN FOREGROUND
- KWIK KOTE STUCCO
- PREFABRICATED STAIR SYSTEM

EXTERIOR COLOR SCHEDULE			
KEY	SURFACE	SCHEME 1	SCHEME 2
(A)	ROOF MATERIAL CONCRETE TILE	MONIER LIFE/TILE - SLATE COLOR: CORNBLUESTONE	MONIER LIFE/TILE - SLATE COLOR: CORNBLUESTONE
(B)	METAL GUTTER	CRISP LINEN SW 6378	CRISP LINEN SW 6378
(C)	EAVE / BARGE BD	CRISP LINEN SW 6378	CRISP LINEN SW 6378
(D)	WINDOW / DOOR TRIM	CRISP LINEN SW 6378	CRISP LINEN SW 6378
(E)	WALL	WHOLE WHEAT SW 6121	KHAKI SHADE SW 7333
(F)	WALL	REGENT TAN SW 7550	WELL BREW BROWN SW 7527
(G)	WALL	SABLE SW 6083	STRAY HARVEST SW 7068
(H)	WINDOW FRAMES	ALMOND (STANDARD) SW 6083	ALMOND (STANDARD) SW 6083
(J)	ENTRY DOORS	SABLE SW 6083	OTTER SW 6041
(K)	GARAGE DOORS	SABLE SW 6083	OTTER SW 6041
(L)	METAL RAILING	URBAN BROZE SW 7048	URBAN BROZE SW 7048
(M)	STONE VENEER	EL DONADO STONE PATTERN: FIELDLEDGE	COLOR: ANDANTE
(N)	LATTICE AT GARAGE	CRISP LINEN SW 6378	CRISP LINEN SW 6378

DRAWING DATE: APRIL 2, 2019

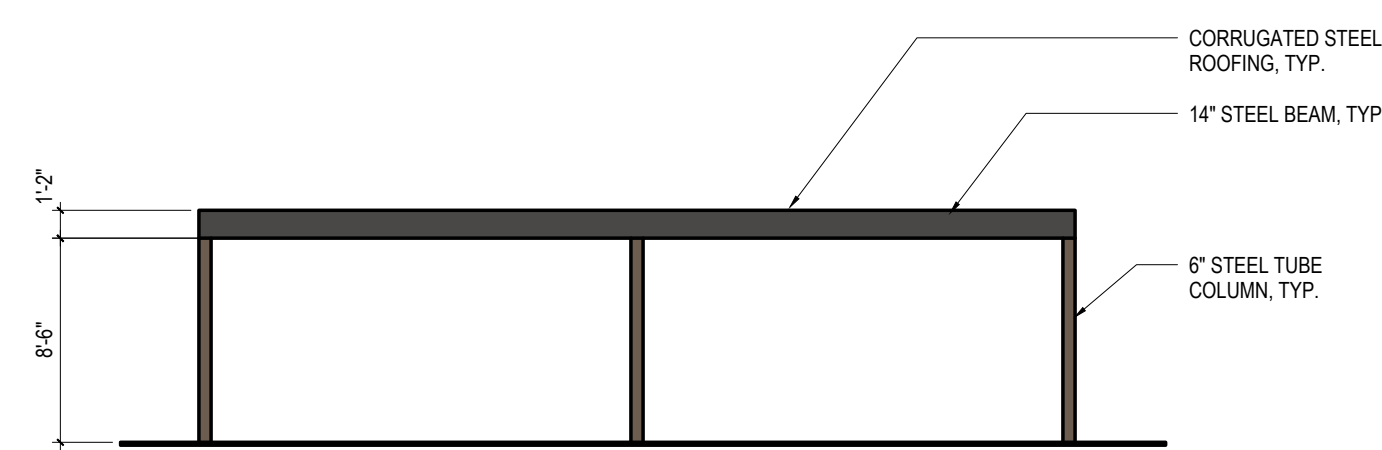
REVISION

▲
▲
▲
▲
▲

DATE OF ISSUE

MOURIER M31 APARTMENTS
80 UNIT APARTMENT PROJECT

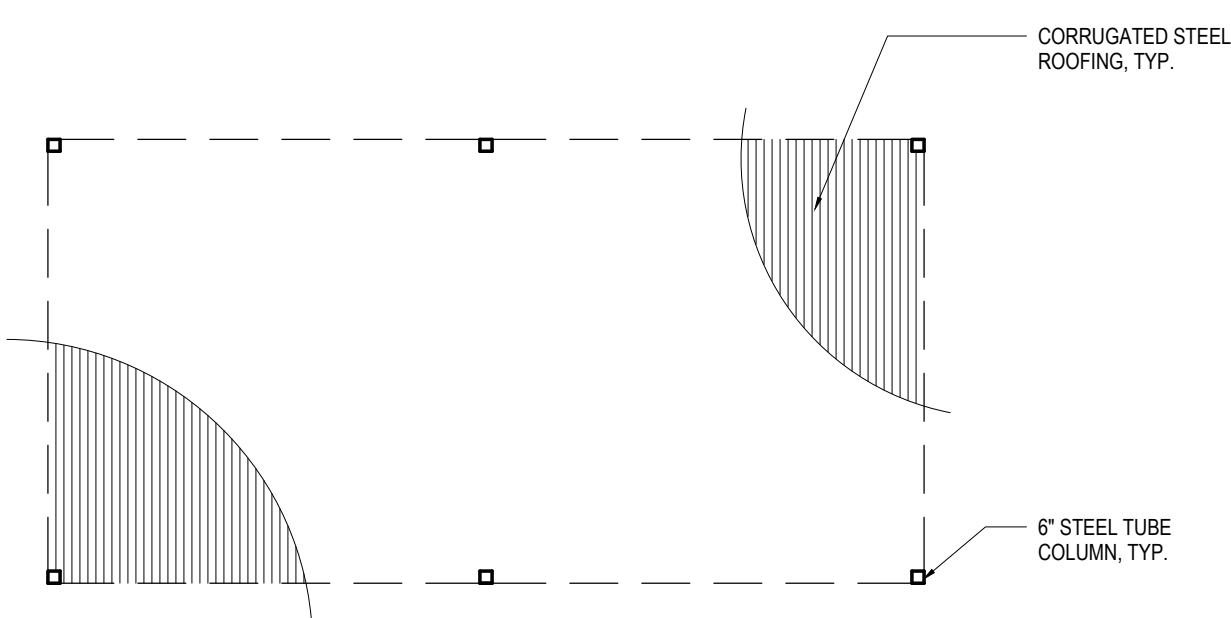
WOOCREEK OAKS BLVD.
ROSEVILLE, CALIFORNIA



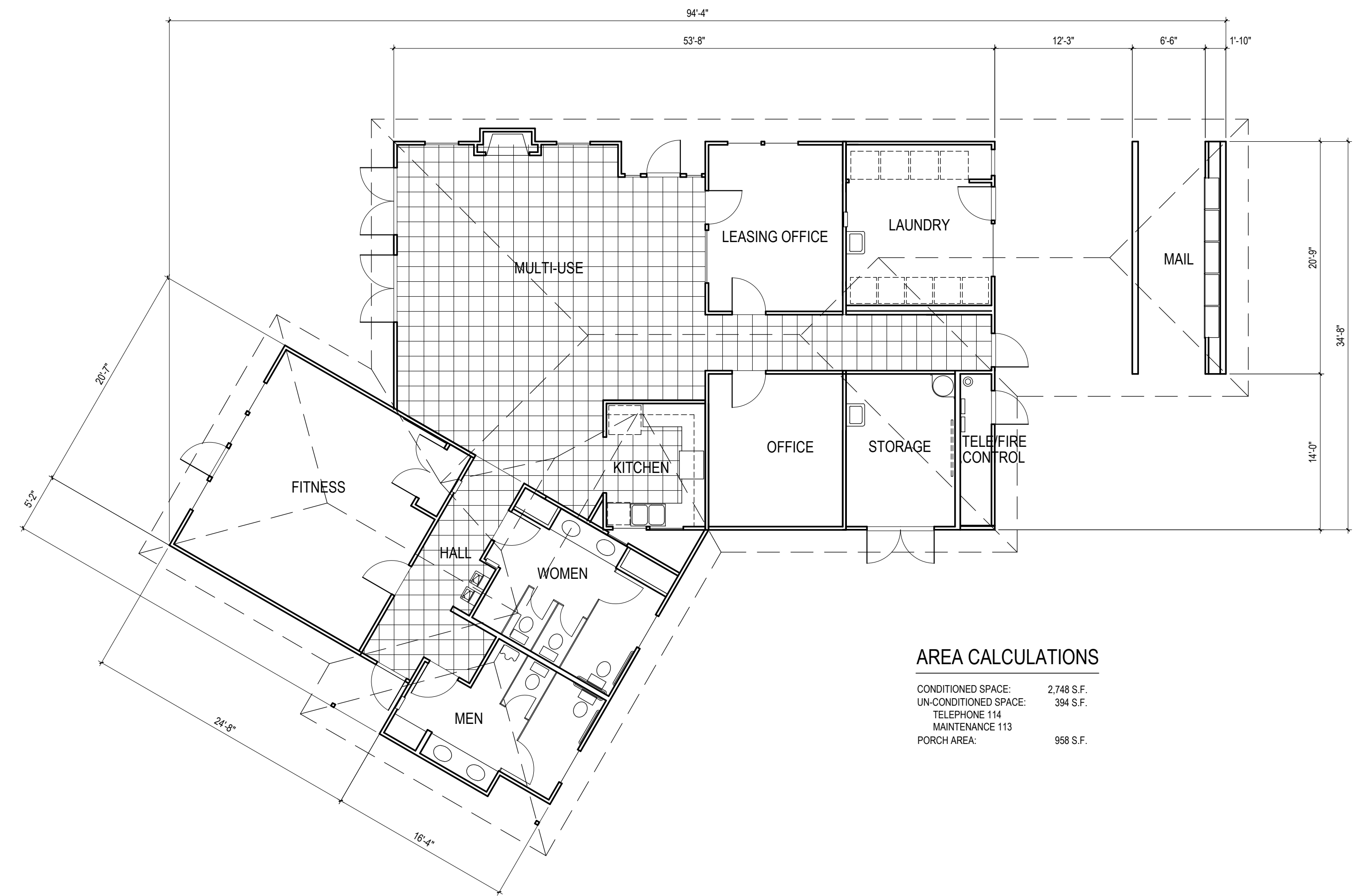
ELEVATION - TYP. CARPORT
1/8"=1'-0"



ELEVATION - TYP. CARPORT
1/8"=1'-0"



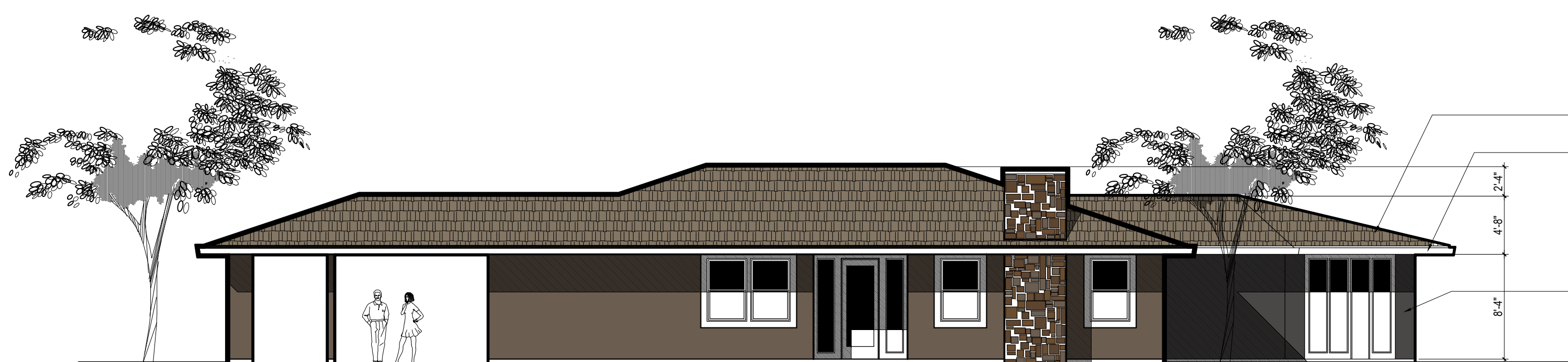
FLOOR PLAN - TYP. CARPORT
1/8"=1'-0"



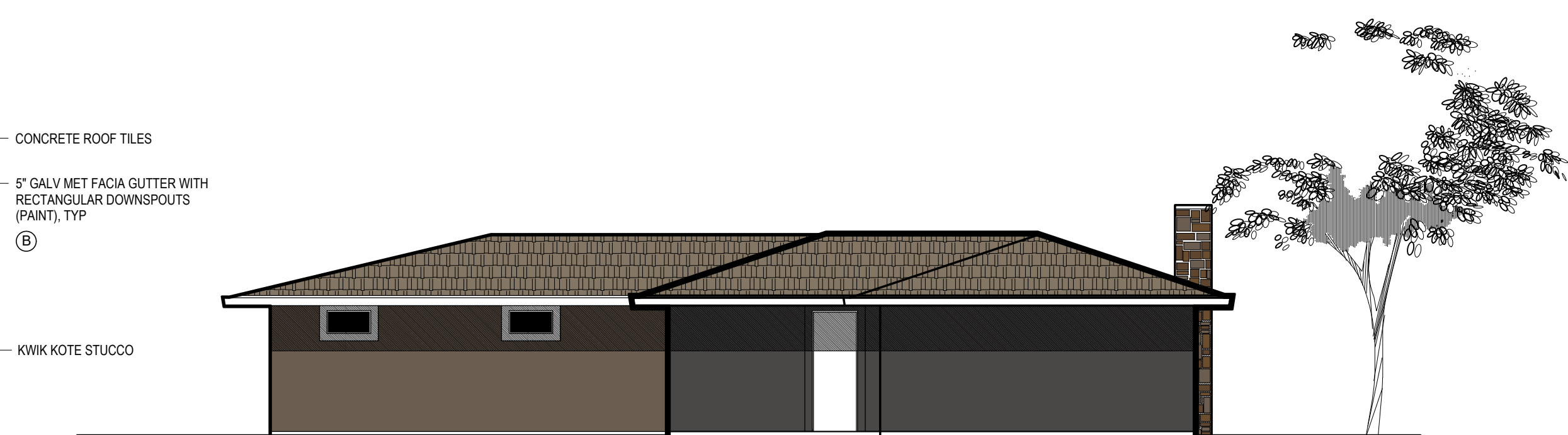
AREA CALCULATIONS

CONDITIONED SPACE:	2,748 S.F.
UN-CONDITIONED SPACE:	394 S.F.
TELEPHONE 114	
MAINTENANCE 113	
PORCH AREA:	958 S.F.

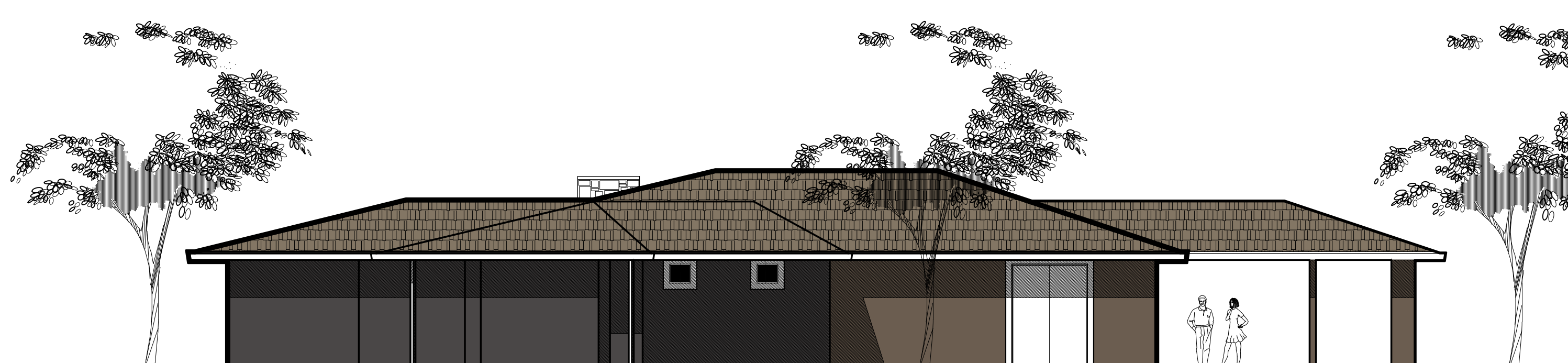
FLOOR PLAN
1/8"=1'-0"



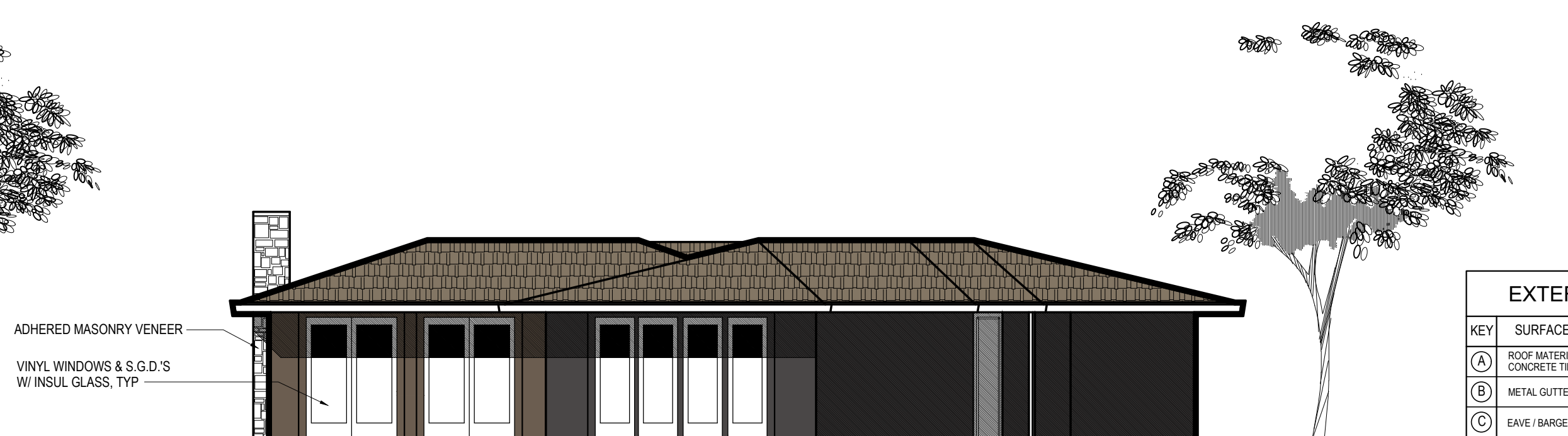
EAST ELEVATION
1/8"=1'-0"



SOUTH ELEVATION
1/8"=1'-0"



WEST ELEVATION
1/8"=1'-0"



NORTH ELEVATION
1/8"=1'-0"

EXTERIOR COLOR SCHEDULE

KEY	SURFACE	SCHEME 1	SCHEME 2
(A)	ROOF MATERIAL CONCRETE TILE	MONIER LIFE TILE - SLATE COLOR: CONBLESTONE	MONIER LIFE TILE - SLATE COLOR: CONBLESTONE
(B)	METAL GUTTER	CRISP LINEN SW 6378	CRISP LINEN SW 6378
(C)	EAVE / BARGE BD	CRISP LINEN SW 6378	CRISP LINEN SW 6378
(D)	WINDOW / DOOR TRIM	CRISP LINEN SW 6378	CRISP LINEN SW 6378
(E)	WALL	WHOLE WHEAT SW 6121	KHAKI SHADE SW 7533
(F)	WALL	REDWAT TAN SW 7550	WELL BREW BROWN SW 7527
(G)	WALL	SABLE SW 6083	STRAY HARVEST SW 7658
(H)	WINDOW FRAMES	ALMOND (STANDARD)	ALMOND (STANDARD)
(J)	ENTRY DOORS	SABLE SW 6083	OTTIE SW 6041
(K)	GARAGE DOORS	SABLE SW 6083	OTTIE SW 6041
(L)	METAL RAILING	URBAN BROZE SW 7048	URBAN BROZE SW 7048
(M)	STONE VENEER	EL DONADO STONE PATTERN: FIELDLEDGE	COLOR: ANDENTE
(N)	LATTICE AT GARAGE	CRISP LINEN SW 6378	CRISP LINEN SW 6378

DRAWING DATE: APRIL 2, 2019

REVISION

▲
▲
▲
▲
▲

DATE OF ISSUE

A8.1